



Regd. Office :
Aldeko Panels Pvt. Ltd.

A-25, First Floor, Pushpanjali Enclave,
Pitampura, Delhi-110034

Works:
Plot No. : B-10, Sidcul, Kotdwar, Uttarakhand.



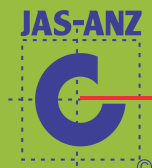
info@aldekopanel.com
www.aldekopanel.com



Customer Care No.
+91 11 4707 4172 | +91 7217714596



ISO: 9001:2015 CERTIFIED CO
ISO: 14001:2015 CERTIFIED CO
ISO: 18001:2015 CERTIFIED CO
ISO: 50001:2011 CERTIFIED CO



For Channel Partner

●Branches & ●Warehouses-

- Delhi ●Haryana ●Punjab ●Jammu & Kashmir ●Himachal ●U.P. ●Uttarakhand ●Bihar
- Jharkhand ●Assam ●Odisha ●West Bengal ●Chhattisgarh ●M.P. ●Rajasthan ●Karnataka
- Telangana ●Maharashtra ●Kerala

ALDEKO
Aluminium Panel Sheets

Bring your vision to life!



VIKANSHU GROUP

New
ARRIVAL



About Company

ALDEKO PANELS is proud to launch its aluminium and metal composite manufacturing facility.

Our premium products will and would inspire new aesthetics and would enable new design possibilities in coming times.

Our commitment to quality, sustainability and customer care is unmatched. **WE KNOW EXCELLENCE.** **ALDEKO** materials stand out and demand to be noticed in any setting.

Exceptional projects demand exceptional materials. **ALDEKO** sheets are manufactured under the most precise and rigorous conditions in Kotdwar, Uttrakhand. Our distribution and support capabilities extend throughout Pan India.

Let us help bring your vision to life with our unmatched selection of colors and finishes.

Our commitment to your satisfaction means that your success is our success.

Build it better with **ALDEKO**. Let's get started.

A Little History

ACP was introduced in 1969. From then on, adoption grew exponentially as architects, fabricators and building owners discovered the functional advantages and beautiful possibilities of this remarkable new material. Came 2018, **ALDEKO** Panels with production and material facility at Kotdwar, Uttrakhand, began production, setting a standard for innovation and quality that would continue to advance today with the introduction of new products and finishes.



FLEXIBLE



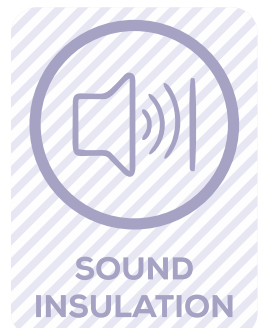
DURABLE



LIGHT WEIGHT



RECYCLABLE



SOUND INSULATION



WEATHER RESISTANT



90° BENDABLE

WABI SABI *Series*

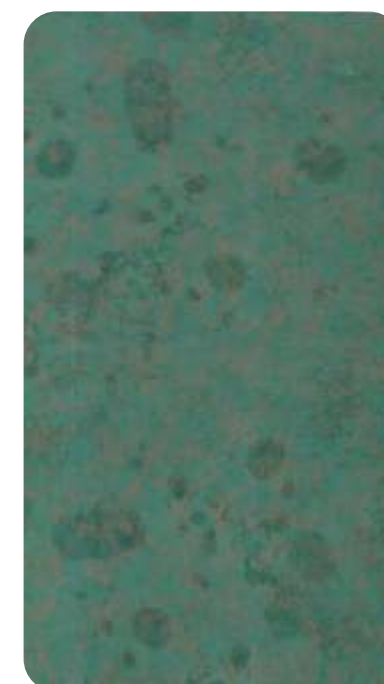


ALW 1031

INDUSTRIAL IRON



ALW 1032
CORTON STEEL



ALW 1033
GREEN COPPER



ALW 1034
GOLD COPPER



ALW 1035
TORN HAZEL

STONE *Series*

**NEW
ARRIVAL**



ALW 1010

BRECCIA BROWN



ALW 1011
SYENITE RED



ALW 1012
PACIFIC GREY



ALW 1013
PIETRA GREY



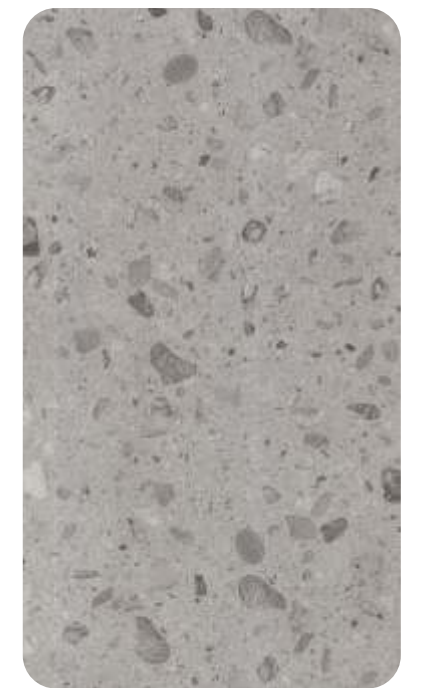
ALW 1014
CREMA CENIA



ALW 1015
VERDE TROPICAL



ALW 1016
BLANCO WHITE



ALW 1017
BLANCO GREY



ALW 1018
TERRA RED



ALW 1019
ICE PEARL



SAND *Series*



ALW 1021
SHADOW BLACK SAND



ALW 1022
DESERT SAND

**NEW
ARRIVAL**



ALW 1023
BEIGE SAND



ALW 1024
IVORY SAND



MARBLE *Series*



ALW 286
ASTANA GREY

**NEW
ARRIVAL**

GLOSSY *Series*



ALT 245
GLOSSY GREY



At Aldeko, we are committed to ensuring the highest quality of our products. To reinforce our dedication to long-term customer satisfaction, we provide a 10-year warranty on our products. This warranty covers delamination, fading, and chalking, reflecting our confidence in the durability and performance of our offerings. We believe that this assurance helps build lasting relationships with our valued customers.

